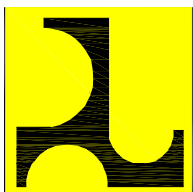


Peta Kondisi SDM dan Sumber Daya Peralatan Balai Geoteknik Jalan

Agustus 2009

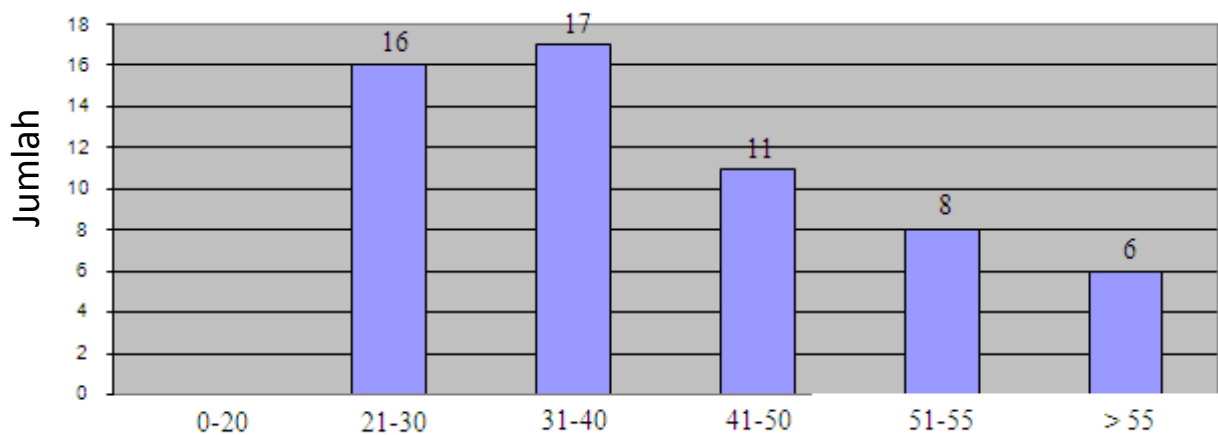


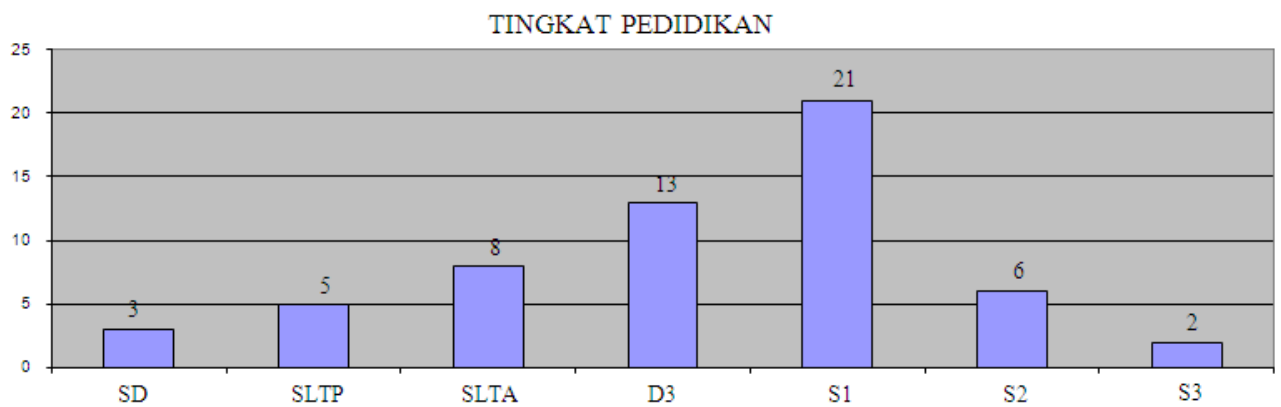
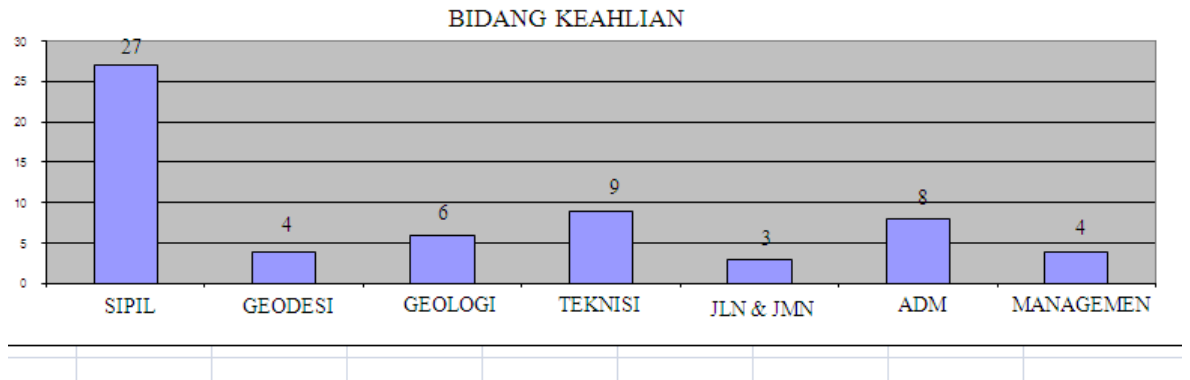
**DEPARTEMEN PEKERJAAN UMUM
BADAN PENELITIAN DAN PENGEMBANGAN
PUSAT PENELITIAN DAN PENGEMBANGAN JALAN
DAN JEMBATAN**

1. Peta Kondisi Sumber Daya Manusia Balai Geoteknik Jalan

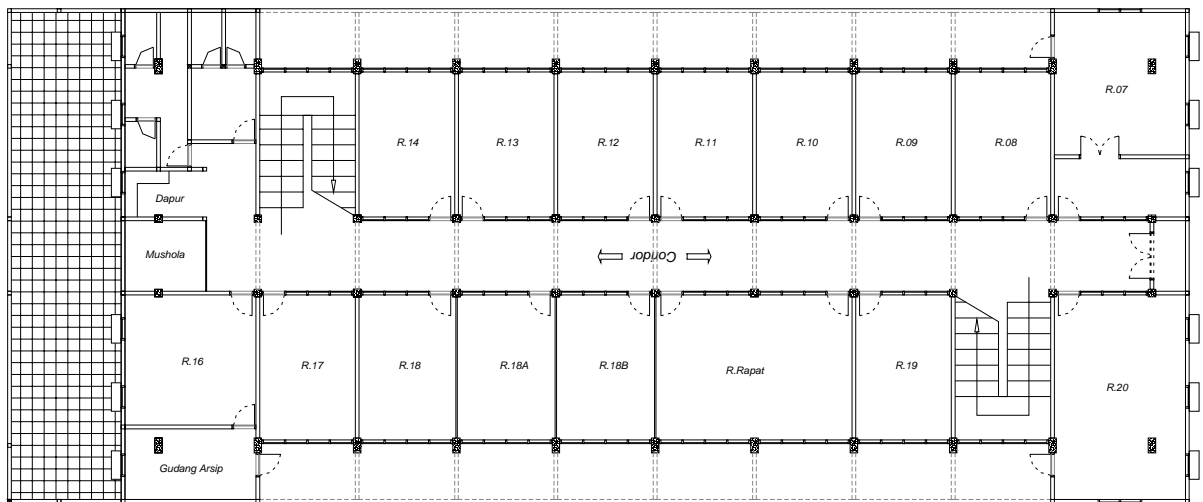
PNS dan Non PNS	
PNS	36 Orang
Non PNS	22 Orang

Pensiun	
2009	1 Orang
2010	3 Orang
1011	1 Orang

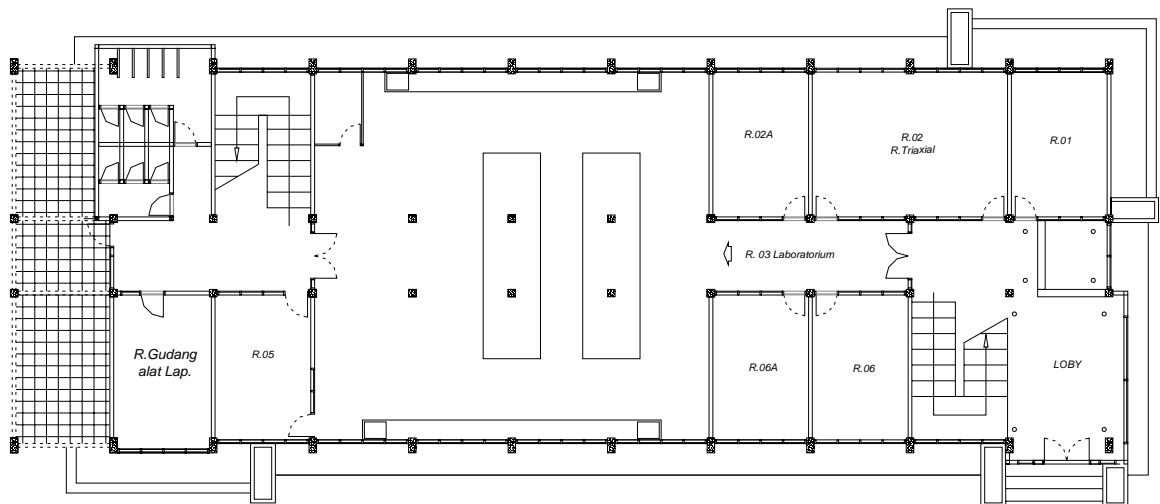




2. Rasio Area Ruang Kerja dan Jumlah Personil Balai Geoteknik Jalan



Lantai 2



Lantai 1 (Dasar)

LUAS AREA RUANG KERJA

385 m²



JUMLAH PERSONIL BALAI GEOTEKNIK JALAN

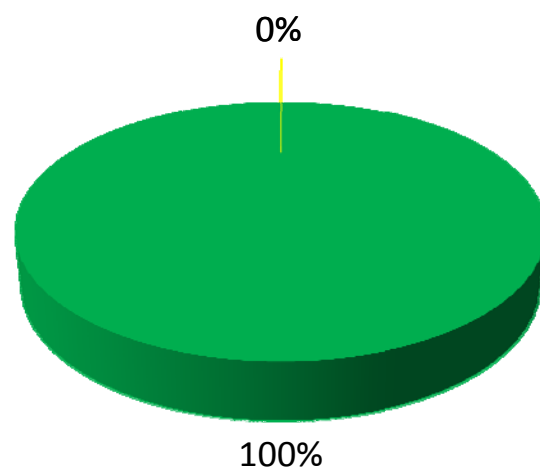
58 ORANG

 ***Rasio Area Ruan Kerja Terhadap Jumlah Personil = 7 m²/Orang***

3. Kondisi Sumberdaya Peralatan

a) Alat Laboratorium

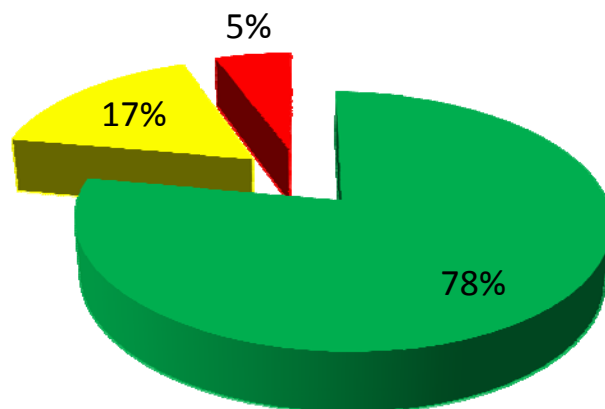
Periode Pengadaan 1970 - 1980



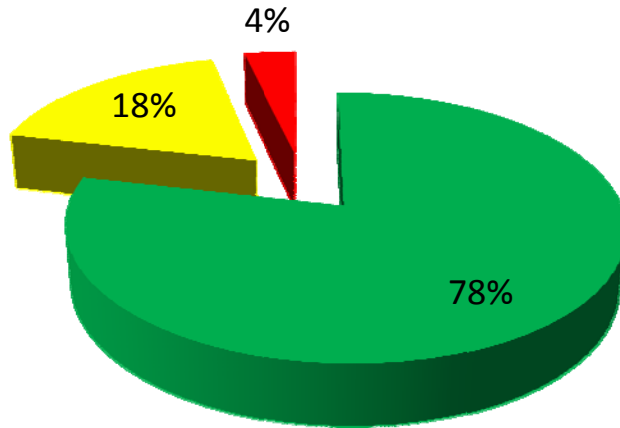
Legenda



Periode Pengadaan 1980 - 1990



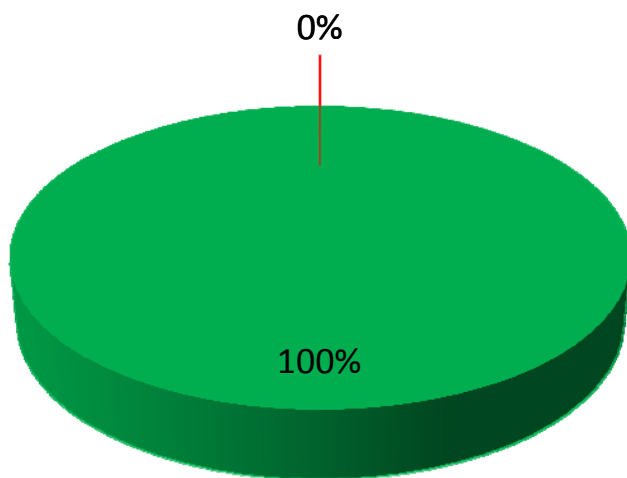
Periode Pengadaan 1990 - 2000



Legenda

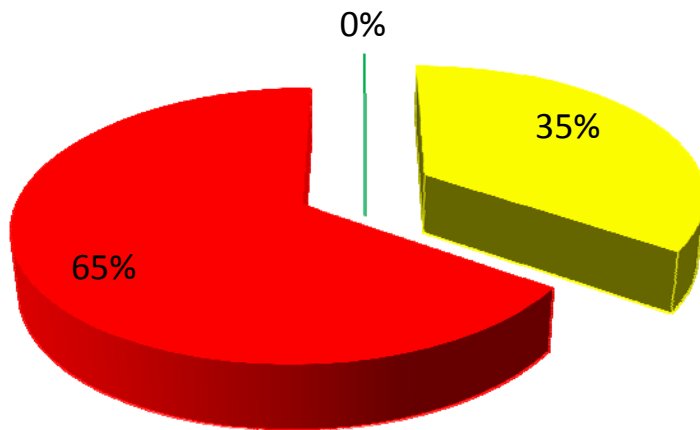


Periode Pengadaan 2000 - 2009



b) Alat Lapangan

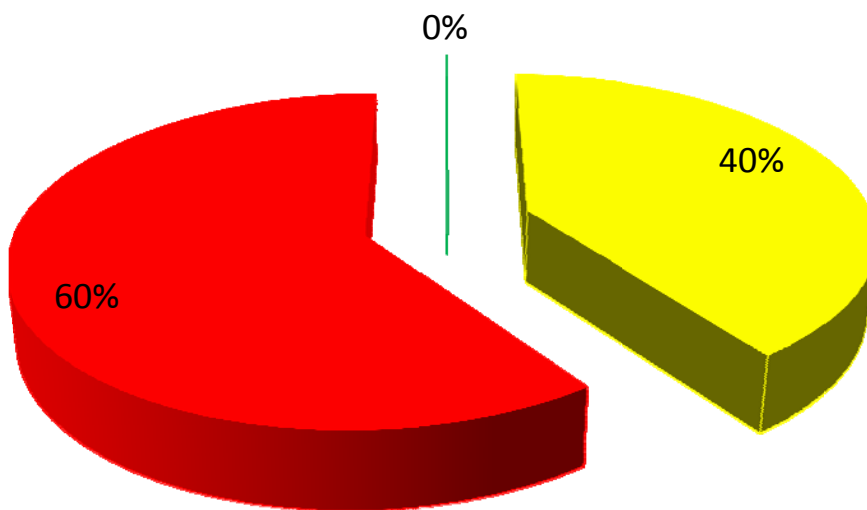
Periode Pengadaan 1970 - 1980



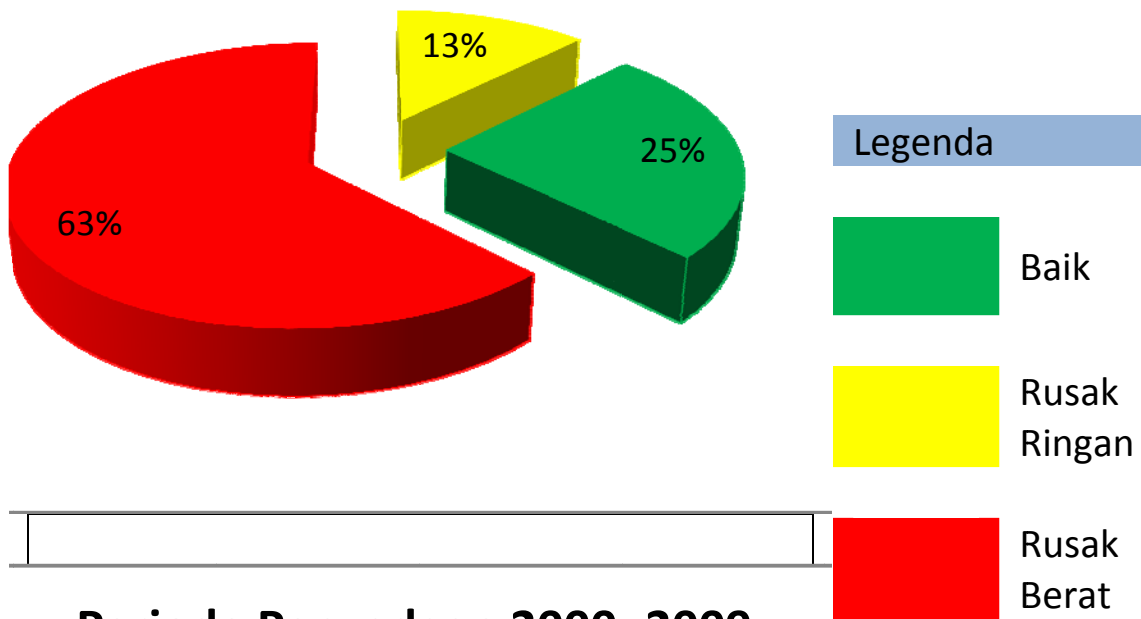
Legenda



Periode Pengadaan 1980 - 1990



Periode Pengadaan 1990 - 2000



Periode Pengadaan 2000 -2009

